



INSTRUCTION BULLETIN

No. 9014051
Machine: M30
Published: 12-2015
Rev. 02

NOTE: DO NOT DISCARD the Parts List from the Instruction Bulletin. Place the Parts List in the appropriate place in the machine manual for future reference. Retaining the Parts List will make it easier to reorder individual parts and will save the cost of ordering an entire kit.

NOTE: Numbers in parenthesis () are reference numbers for parts listed in Bill of Materials.

Installation instructions for **kit number 9014027**

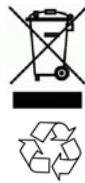
SYNOPSIS:

This kit contains the parts needed to install the telemetry kit M30 machines.
Please follow step-by-step instructions.

SPECIAL TOOLS / CONSIDERATIONS: NONE

(Estimated time to complete: 60 minutes)

The IRIS (telemetry module) must be activated to complete this installation. The module will not function until it is activated. Call local IRIS expert for assistance activating the module after all telemetry components have been installed. Have machine serial number and IRIS module SIM number (located on back of IRIS control box assembly) ready when calling for activation.



PROTECT THE ENVIRONMENT

Please dispose of packaging materials, used machine components such as batteries and fluids in an environmentally safe way according to local waste disposal regulations.

Always remember to recycle.

PREPARATION:

1. Start machine. Observe the LCD display for fault / diagnostic codes. All fault / diagnostic codes must be corrected before the IRIS system can be installed onto the machine.
2. Park the machine on a clean level surface and set the parking brake, turn off the machine, and remove the key.

FOR SAFETY: Before leaving or servicing machine, stop on level surface, turn off machine, remove key, and set parking brake.

3. Disconnect the battery cables from the battery.



WARNING: Always disconnect battery cables from machine before working on electrical components.

4. Remove the engine access panel from the operator compartment. Set the mounting hardware aside. Discard the engine access panel. (Fig. 1)

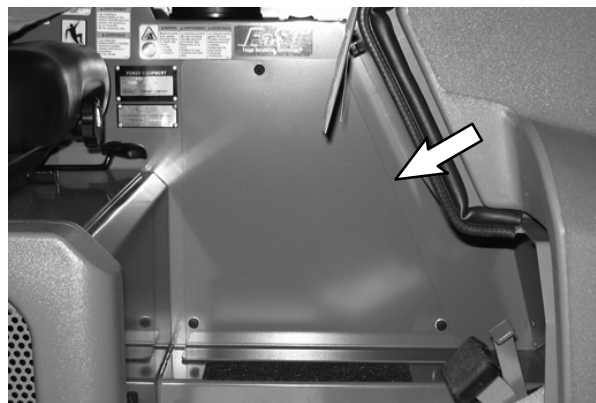


FIG. 1

INSTALLATION:

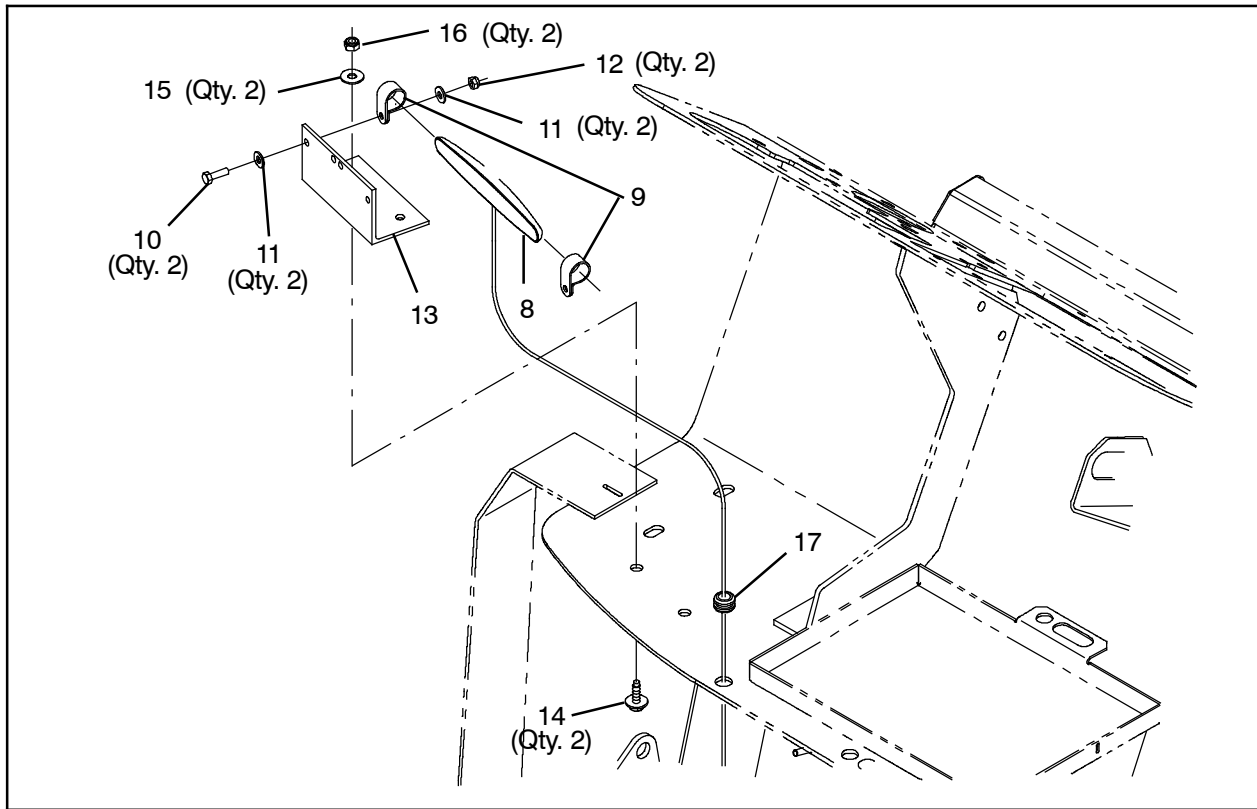


FIG. 2

1. Use two M5 hex screws (10), four flat washers (11), two M5 hex nuts (12), and two cable clamps (9) to install the telemetry antenna (8) onto the telemetry antenna bracket (13). (Fig. 2)
2. Use two SEMS M6 hex screws (14) two flat washers (15), and two M6 hex nuts (16) to install the telemetry antenna (8) / telemetry antenna bracket (13) onto the front of the operator compartment. (Fig. 2)
3. Insert the rubber grommet (17) into the hole located near the battery in the front of the operator compartment. (Fig. 2)
4. Route the telemetry antenna (8) cable through the grommet (17) installed into the operator compartment in the previous step, across the top of the fuse cover box under the battery tray, and around under the battery tray. (Fig. 2 / Fig. 3 / Fig. 4)



FIG. 3

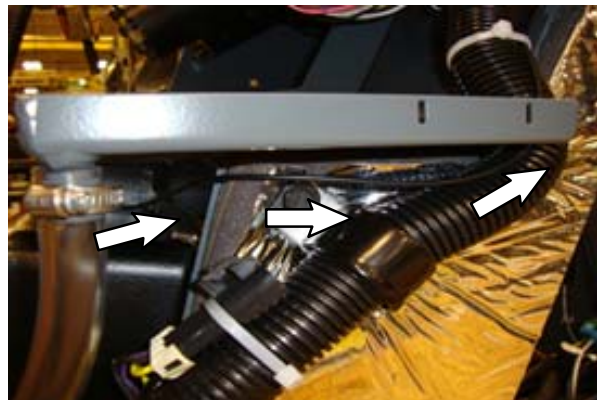


FIG. 4

- Use cable ties to secure the telemetry antenna (8) wire to the main wire harness. (Fig. 5)



FIG. 5

- Connect the telemetry harness (7) to the main wire harness. (Fig. 6 / Fig. 7)

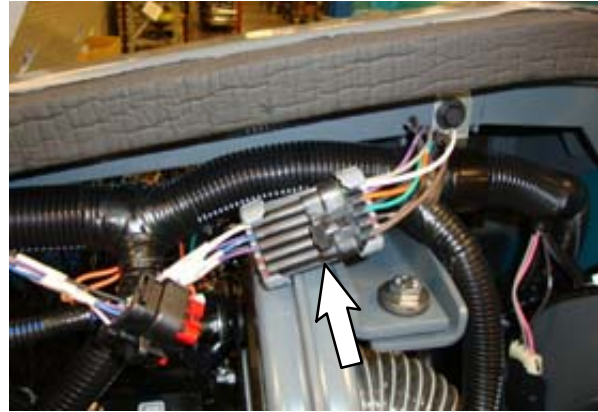


FIG. 6

- Route the telemetry harness (7) to the opening where the engine access panel was previously located.

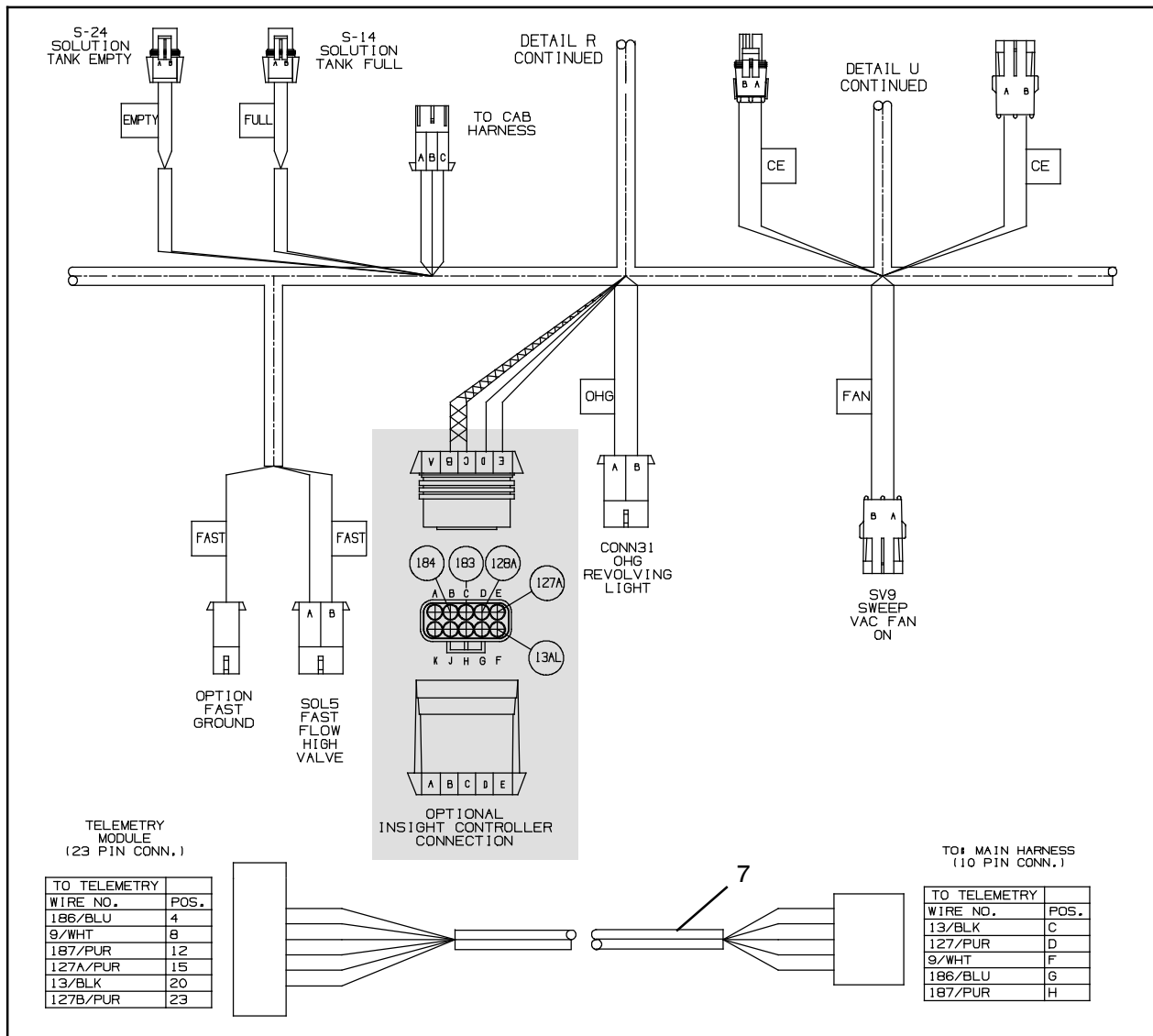


FIG. 7

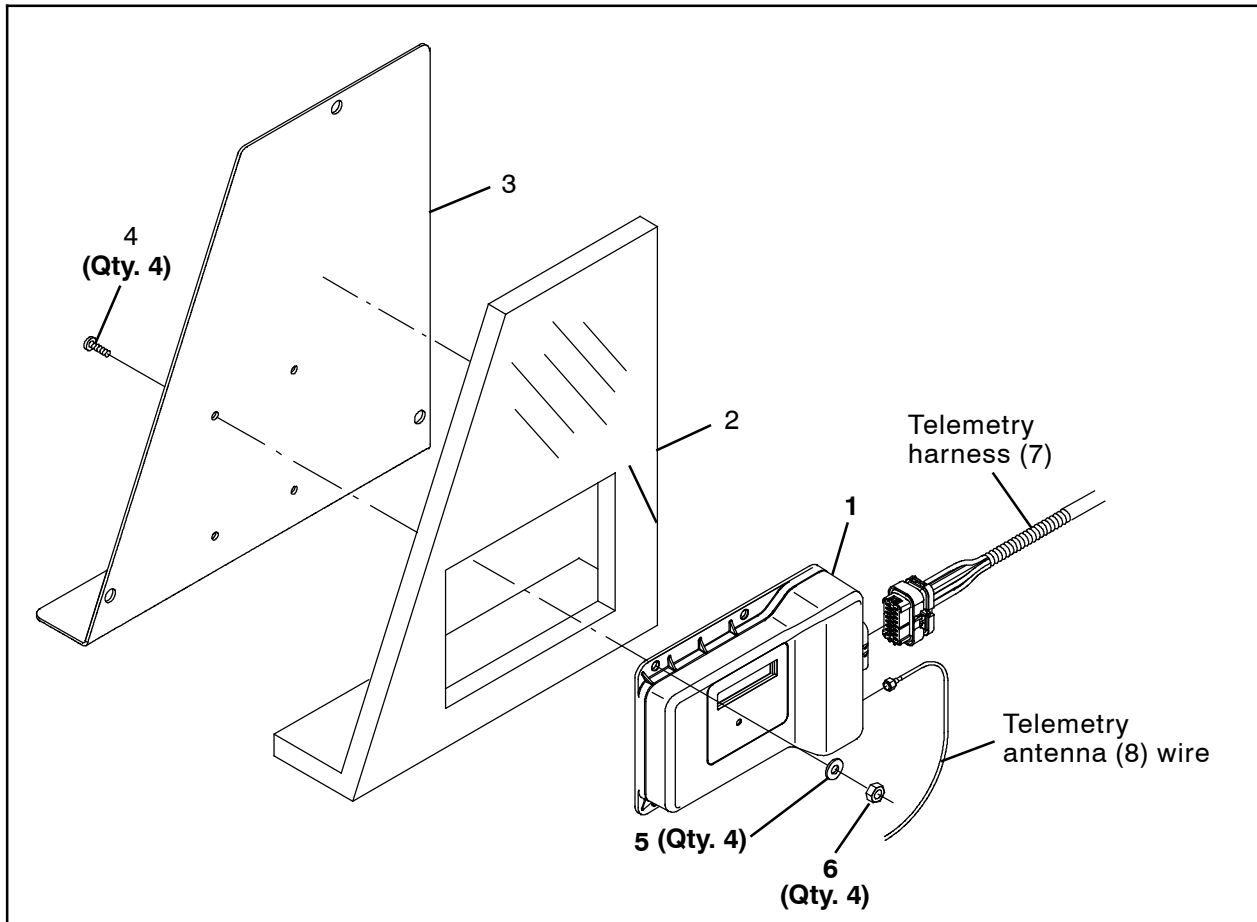


FIG. 8

8. Remove the additional SIM label from the back of the control box (1) and set label aside in a safe place. The number on the SIM label will be needed for activating the machine. (Fig. 9)

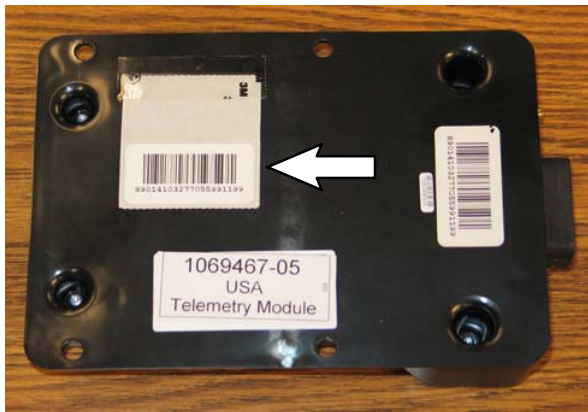


FIG. 9

9. Use four M6 button screws (4), four flat washers (5), and four M6 hex nuts (6) to install the telemetry module (1) onto the new access panel (3). (Fig. 8)

10. Install the insulation (2) onto the access panel (3). (Fig. 8)

11. Place the access panel (3) / telemetry module (1) on the floor of the operator compartment near the opening where the old access panel was previously located.

12. Connect the telemetry antenna (8) wire and telemetry harness (7) to the telemetry module (1). (Fig. 6 / Fig. 8)

13. Reconnect the battery cables to the battery.

14. Install the access panel (3) / telemetry module (1) onto the machine.

15. Clean the area in the operator compartment where the telemetry label (18) is supposed to be located and install the telemetry label onto the operator compartment. (Fig. 10)



FIG. 10

16. Start and test the machine.
17. Activate the IRIS (telemetry module): Call local IRIS expert for assistance to activate the module. The IRIS telemetry system must be activated to complete this install. Have machine serial number and IRIS module SIM number ready when calling for activation.

NOTE: The IRIS (telemetry module) must be activated to complete this installation. The module will not function until it is activated. Call local IRIS expert for assistance activating the module after all telemetry components have been installed.

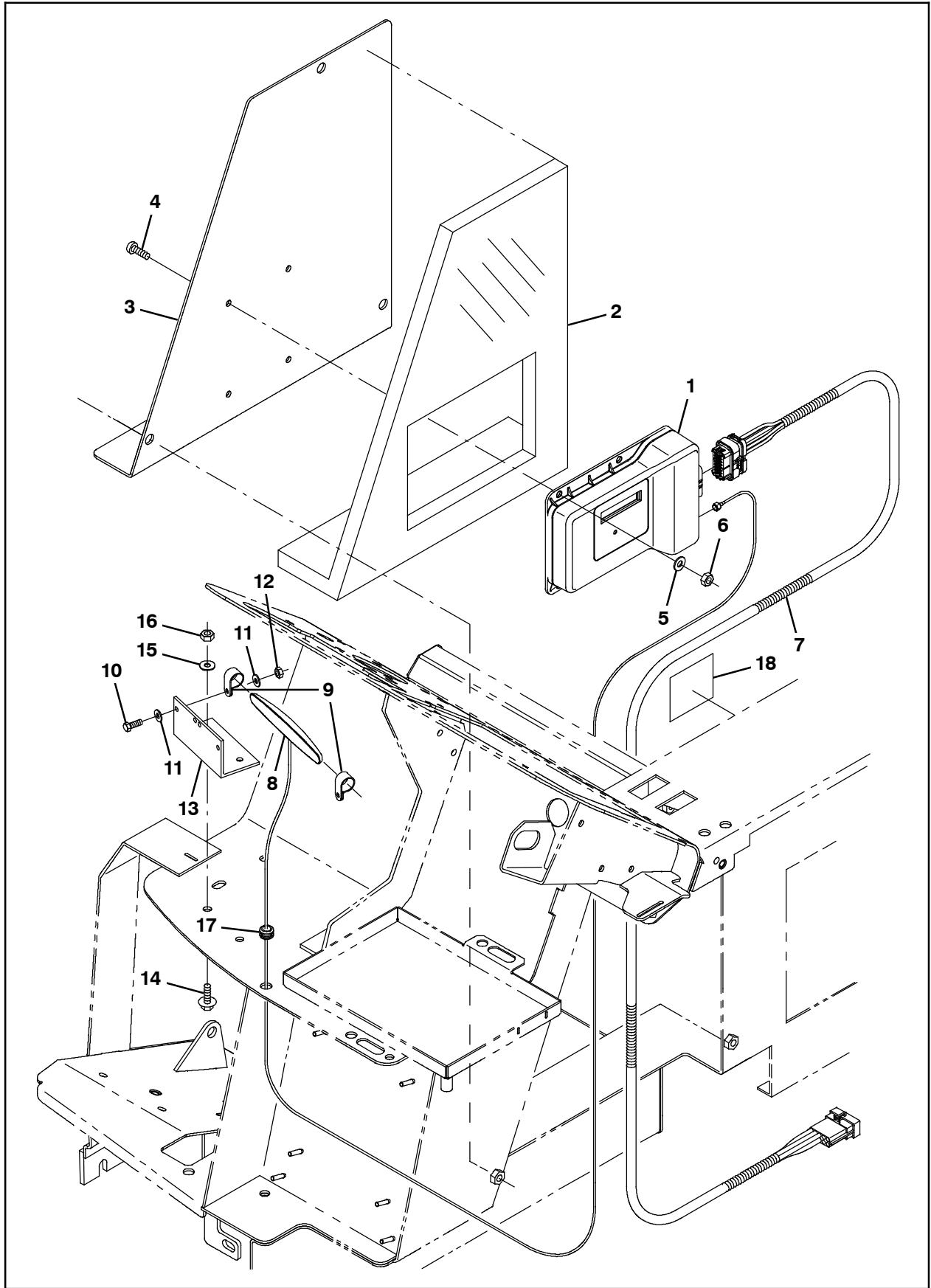


FIG. 12

Bill Of Materials For Telemetry Kit, CI [M30, Intl/EU] - 9014027

Ref.	Tennant Part No.	Description	Qty.
1	1070541	Control Box Assy, Telem [3G, Intl.]	1
2	1069761	Insulation, Flame- retardant, 0.75- 0.88	1
3	1069755	Panel, Access, Door	1
4	763147	Screw, Btn, N6X1.0X20, 10.9	4
5	32483	Washer, Flat, 0.25, SAE	4
6	08708	Nut, Hex, lock, M6X1.00, NI	4
7	1069662	Harness, Extn, Telem [M30]	1
8	1070659	Antenna, Telem, 70In [GPRS]	1
9	140916	Clamp, Cable, Nyl, 0.62D, Nat	2
10	24199	Screw, hex, M5X0.80X16, SS	2
11	01683	Washer, Flat, 10, SS	4
12	06549	Nut, Hex, Lock, M5X0.80, NI	2
13	1070402	Angle, Mtg, Antenna, Telem	1
14	1040467	Screw, hex, M6X1.00X20, 9.8, SEMS	2
15	01684	Washer, Flat, 0.27B 0.69D .05, SS	2
16	08712	Nut, hex, lock, m6X1.00, NI, SS	2
17	10632- 12	Grommet, Rbr, 0.38ld, F/0.5H, .12 Matl	1
18	1069580	Label, Opertnl, Telem [FCC/IC]	1

TENNANT COMPANY
P. O. Box 1452
Minneapolis, MN 55440-1452